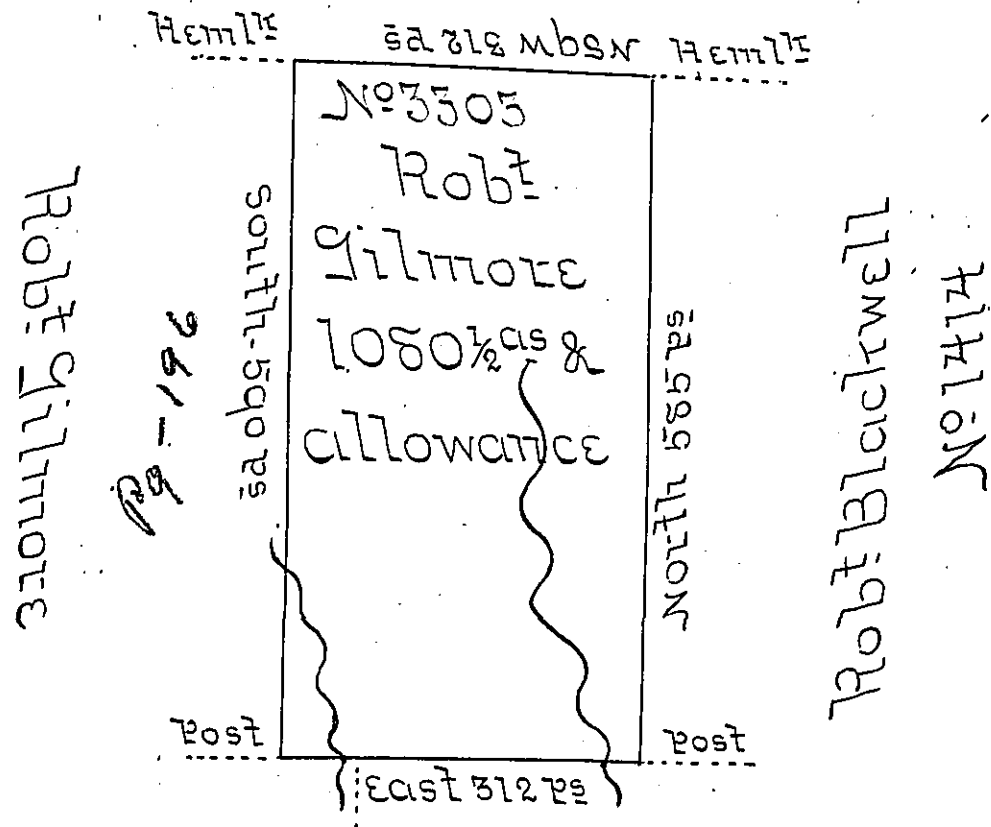


State of New York



Robt Blackwell

Surveyed the above described tract of land on the  
 17th day of the 11th mo 1795 for Robt Gilmore in pur-  
 suance of his warrant dated the 17th day of Decemr  
 1792 adjoining his other land and the State of  
 New York containing one thousand and eighty  
 acres and a half and the allowance of six per cent.

William Ellis D.S.

Daniel Brodhead Esq  
 Surveyor Genl

IN TESTIMONY that the above is a copy of the original remaining on file in  
 the Department of Internal Affairs of Pennsylvania, made  
 conformably to an Act of Assembly approved the 16th day of  
 February, 1833, I have hereunto set my Hand and caused  
 the Seal of said Department to be affixed at Harrisburg,  
 this third day of January 1905.

*George R. Perry*  
 Secretary of Internal Affairs